

BEEF TENDERLOIN STEAK READY MV



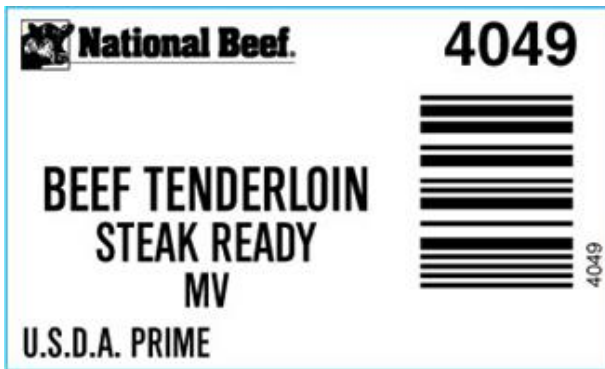
The Beef Loin Steak Ready Tenderloin MV is derived from a regular PSMO SMO. Surface fat is trimmed off including blue tissue. The belly is trimmed free of fat, ribbon meat. Shingles approximately 1/2" in depth are acceptable. Wedge fat under the ear is trimmed. The side muscle will be removed to the head of the tender to the seam of the side muscle which is approx. 7" – 8" from the tip of the main body of the tender muscle. Individual packages will have a nutritional label only. No product description label will be used.

Image of product is not meant to represent the actual product trim specification

Product Code: 4049
Description: BEEF TENDERLOIN STEAK READY MV
USDA Grade: Prime
GTIN: 90710178040496

Case Dimensions: 20.6250" x 15.6875" x 7.3750"
Cube: 1.38
Pallet Tie x High: 6 x 9
Avg Case Weight: 27.3
Pieces/Box: 6

Box End Label



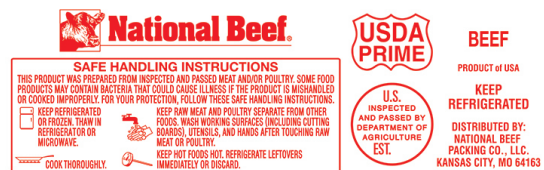
Brand Logo



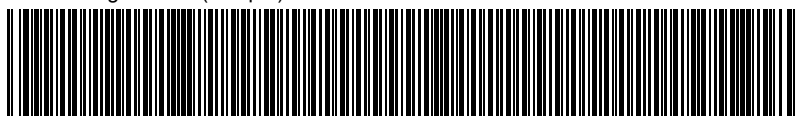
Box



Bag Impression



GS-128 Weight Label (sample)



(01)90710178040496(3201)000273(11)260624(21)12345678

NOTICE: The above statements, recommendations, suggestions and data we believe to be reliable. Nevertheless, all such statements, recommendations, suggestions and data herein above presented are made without guarantee, warranty, or responsibility of any kind on our part. The above information is subject to change without notice.