

BEEF RIB BNLS LIPON 2X2 F/R



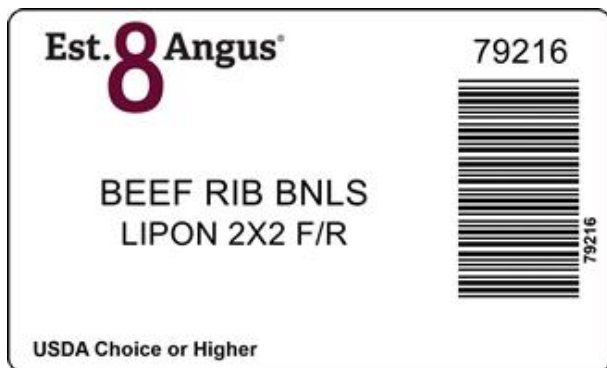
The Beef Rib Bnls. Lip-On Ribeye has the same description and procedure as the Ribeye, except it has a 2" lip extension. Lip is removed at a point 2" from each of the extreme outer edges of the ribeye muscle end. All back strap, cartilage, loose fat and loose meat is removed. The rib fingers are removed. A piece of blade meat may remain on the fat surface of lip-on.

Image of product is not meant to represent the actual product trim specification

Product Code: 79216
Description: BEEF RIB BNLS LIPON 2X2 F/R
Program: Upper Choice
GTIN: 90710178792166

Case Dimensions: 15.7500" x 15.7500" x 7.5000"
Cube: 1.08
Pallet Tie x High: 6 x 9
Avg Case Weight: 37.3
Bags/Box: 2
Pieces/Box: 2

Box End Label



Brand Logo



Box



Bag Impression



GS-128 Weight Label (sample)



NOTICE: The above statements, recommendations, suggestions and data we believe to be reliable. Nevertheless, all such statements, recommendations, suggestions and data herein above presented are made without guarantee, warranty, or responsibility of any kind on our part. The above information is subject to change without notice.