



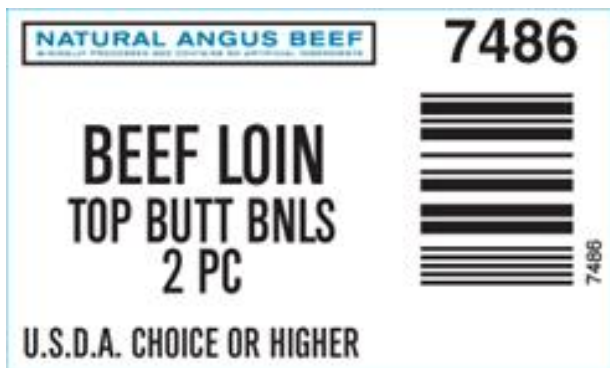
The Beef Loin – Top Butt Bnls. 2pc is derived from the Top Butt and is produced after the bones have been removed. The Coulotte Muscle (Biceps Femoris) is removed at the natural seam with flake fat allowed to remain. The fat pad beneath the coulotte may remain but may not contain any underlying adjacent lean associated with the tri tip. All muscles are removed with the exception of the Gluteus Medius, both muscles on the underside of the large main muscle are removed the “mouse” muscle is removed. The sciatic nerve is removed also. The Coulotte Muscle is denuded.

Image of product is not meant to represent the actual product trim specification

Product Code: 7486
Description: BEEF LOIN-TOP BUTT 2PC
USDA Grade: Choice
GTIN: 90710178074866

Case Dimensions: 23.6250" x 15.7500" x 9.2500"
Cube: 1.99
Pallet Tie x High: 5 x 6
Avg Case Weight: 68.7
Bags/Box: 10
Pieces/Box: 8

Box End Label



Brand Logo



Bag Impression

SAFE HANDLING INSTRUCTIONS
THIS PRODUCT WAS PREPARED FROM INSPECTED AND PASSED MEAT AND/OR POULTRY. SOME FOOD PRODUCTS MAY CONTAIN BACTERIA THAT COULD CAUSE ILLNESS IF THE PRODUCT IS MISHANDLED OR COOKED IMPROPERLY. FOR YOUR PROTECTION, FOLLOW THESE SAFE HANDLING INSTRUCTIONS.

- KEEP REFRIGERATED OR FROZEN. THAW IN REFRIGERATOR OR MICROWAVE.
- KEEP RAW MEAT AND POULTRY SEPARATE FROM OTHER FOODS. WASH WORKING SURFACES, INCLUDING CUTTING BOARDS, UTENSILS, AND HANDS AFTER TOUCHING RAW MEAT OR POULTRY.
- COOK THOROUGHLY.
- KEEP HOT FOODS HOT. REFRIGERATE LEFTOVERS IMMEDIATELY OR DISCARD.

NATURAL ANGUS BEEF
MINIMALLY PROCESSED AND CONTAINS NO ARTIFICIAL INGREDIENTS

- NO ANTIBIOTICS EVER
- NO ADDED HORMONES EVER
- HUMANELY RAISED*
- USA BORN & RAISED

*NATIONAL BEEF VERIFIES THIS AS CATTLE RAISED AND FED BY OPERATIONS PROVIDING A LOW STRESS ENVIRONMENT. LEARN MORE AT WWW.NATIONALBEEF.COM

BEEF

U.S. INSPECTED AND PASSED BY DEPARTMENT OF AGRICULTURE EST.

PRODUCT OF USA

KEEP REFRIGERATED

DISTRIBUTED BY:
 NATIONAL BEEF PACKING CO., LLC.
 KANSAS CITY, MO 64163

GS-128 Weight Label (sample)



(01)90710178074866(3201)000687(11)260624(21)12345678

NOTICE: The above statements, recommendations, suggestions and data we believe to be reliable. Nevertheless, all such statements, recommendations, suggestions and data herein above presented are made without guarantee, warranty, or responsibility of any kind on our part. The above information is subject to change without notice.