

BEEF LOIN BUTT TENDERLOIN PLD

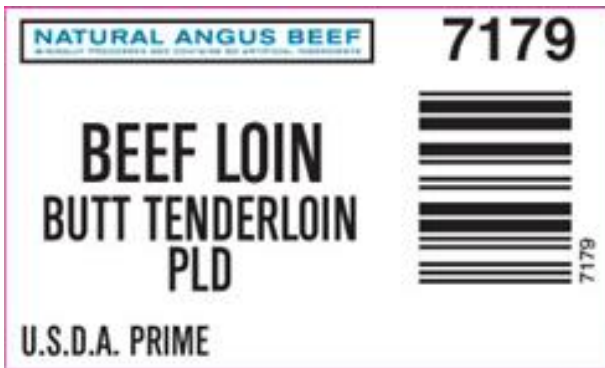


The Beef Loin-Butt Tender Pld. consists of the portion of the tenderloin removed from the bone-in hip or sirloin butt. The wedge fat underneath the ear will be opened back 1" from the ear tip. Firmly attached ribbon meat and associated fat underneath the ribbon meat may remain. Butt Tender is trimmed free of heavy fat. Veil fat and fat in the seam between main body and side muscle (rope meat) may remain. Edge fat is trimmed back flush with the main body of the butt tender.

Image of product is not meant to represent the actual product trim specification

| | | | |
|----------------------|-------------------------------|---------------------------|-------------------------------|
| Product Code: | 7179 | Case Dimensions: | 23.6250" x 15.7500" x 9.2500" |
| Description: | BEEF LOIN BUTT TENDERLOIN PLD | Cube: | 1.99 |
| USDA Grade: | Prime | Pallet Tie x High: | 5 x 7 |
| GTIN: | 90710178071797 | Avg Case Weight: | 40.6 |
| | | Bags/Box: | 12 |
| | | Pieces/Box: | 12 |

Box End Label



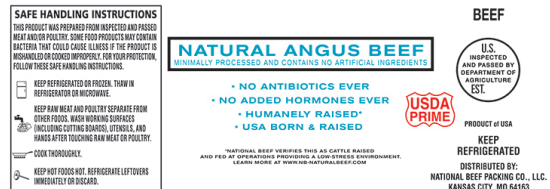
Brand Logo



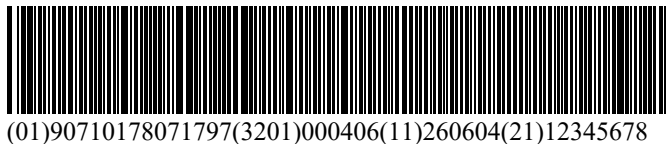
Box



Bag Impression



GS-128 Weight Label (sample)



NOTICE: The above statements, recommendations, suggestions and data we believe to be reliable. Nevertheless, all such statements, recommendations, suggestions and data herein above presented are made without guarantee, warranty, or responsibility of any kind on our part. The above information is subject to change without notice.