

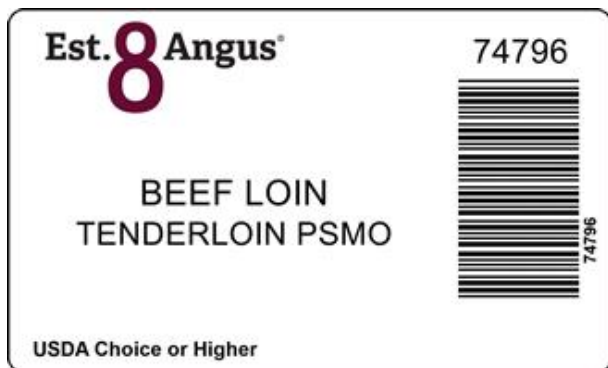


Tenderloin Defatted/Side Muscle On is produced from beef tenderloin; it is trimmed with side muscle left attached. Flake fat is allowed over silver skin of the tender. The wedge fat underneath the ear will be notched approximately 1/2" from the ear tip. Ribbon meat and underlying ribbon fat if firmly attached is allowed up to 5" of the tenderloin. The side muscle shall remain attached to the tenderloin by leaving enough connective tissue creating a veil over the natural seam. The side muscle can be loose on the tail end up to a length of approximately 2".

Image of product is not meant to represent the actual product trim specification

Product Code:	74796	Case Dimensions:	15.7500" x 15.7500" x 9.2500"
Description:	BEEF LOIN TENDERLOIN PSMO	Cube:	1.33
Program:	Upper Choice	Pallet Tie x High:	5 x 6
GTIN:	90710178747968	Avg Case Weight:	68.5
		Bags/Box:	10
		Pieces/Box:	10

Box End Label



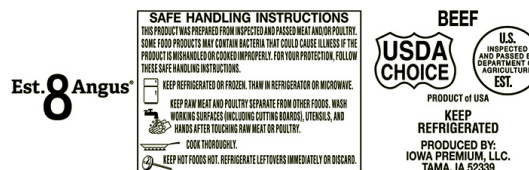
Brand Logo



Box



Bag Impression



GS-128 Weight Label (sample)



(01)90710178747968(3201)000685(11)260623(21)12345678

NOTICE: The above statements, recommendations, suggestions and data we believe to be reliable. Nevertheless, all such statements, recommendations, suggestions and data herein above presented are made without guarantee, warranty, or responsibility of any kind on our part. The above information is subject to change without notice.