



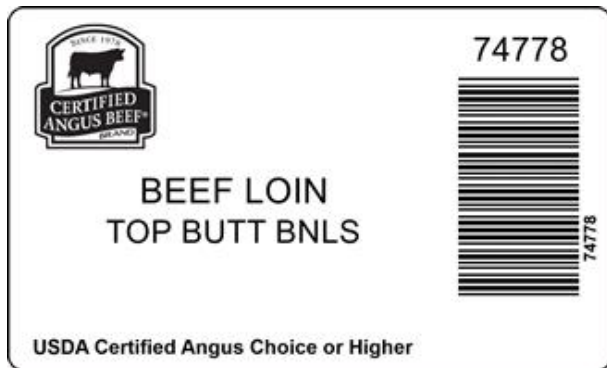
Image of product is not meant to represent the actual product trim specification

The Beef Loin-Top Butt Bnls. is the trimmed portion of the bone-in top sirloin. It is produced by removal of the hip bone and vertebrae. The top sirloin bone-in is separated from the bone-in strip by a saw cut approximately 90 degrees to the backbone and approximately parallel to the face of the top butt leaving five sacral vertebrae. The top butt is separated from the bottom butt by a cut through the natural seam (blue tissue) leaving a portion of the bottom sirloin butt attached to the top butt. Overall fat cover is trimmed to an average of 1" and edges beveled to an average of 1/2". All bones are removed and removal of femur bone shall not leave a hole exceeding more than 1/2".

Product Code: 74778
Description: BEEF LOIN TOP BUTT BNLS
Program: Upper Choice
GTIN: 90710178747784

Case Dimensions: 15.7500" x 15.7500" x 9.2500"
Cube: 1.33
Pallet Tie x High: 5 x 6
Avg Case Weight: 82.0
Bags/Box: 5
Pieces/Box: 5

Box End Label



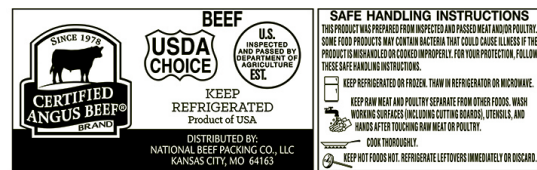
Brand Logo



Box



Bag Impression



GS-128 Weight Label (sample)



(01)90710178747784(3201)000820(11)260624(21)12345678

NOTICE: The above statements, recommendations, suggestions and data we believe to be reliable. Nevertheless, all such statements, recommendations, suggestions and data herein above presented are made without guarantee, warranty, or responsibility of any kind on our part. The above information is subject to change without notice.