

BEEF ROUND GOOSENECK

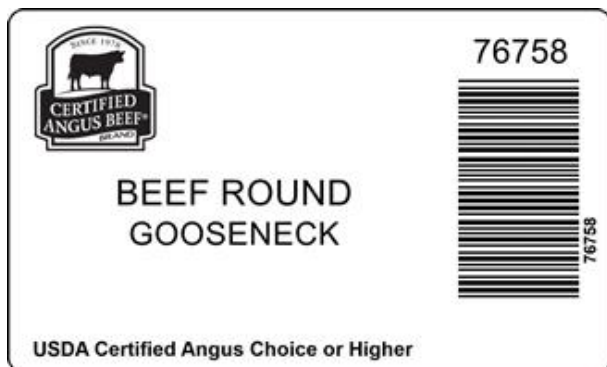


Gooseneck round is the portion of the round remaining after the removal of the Inside Round, Knuckle, Shank Meat, and all bones. The Knuckle, Inside Round and Gooseneck are separated by a cut along the natural seam. The Gooseneck is comprised of the Flat, Eye and Heel in one piece. Surface fat will be an average of 1" with the edges beveled to approximately 1/2". Tendons are trimmed on shank end to expose lean tissue.

Image of product is not meant to represent the actual product trim specification

Product Code:	76758	Pallet Tie x High:	0 x 0
Description:	BEEF ROUND GOOSENECK	Avg Case Weight:	68.4
Program:	Upper Choice	Bags/Box:	2
GTIN:	90710178767584	Pieces/Box:	2

Box End Label



Brand Logo



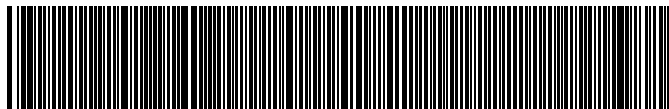
Box



Bag Impression



GS-128 Weight Label (sample)



(01)90710178767584(3201)000684(11)260612(21)12345678

NOTICE: The above statements, recommendations, suggestions and data we believe to be reliable. Nevertheless, all such statements, recommendations, suggestions and data herein above presented are made without guarantee, warranty, or responsibility of any kind on our part. The above information is subject to change without notice.