

BEEF FLANK STEAK



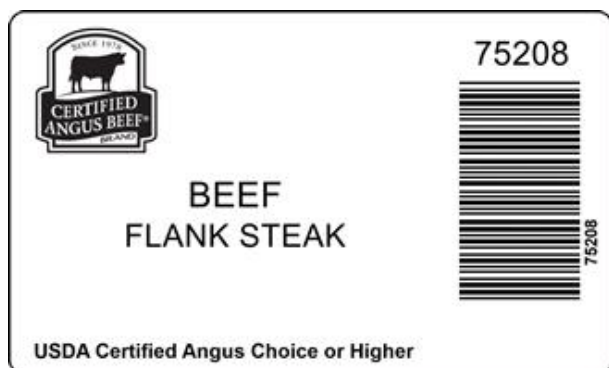
Flank Steak is the flat, elongated muscle embedded under the serous membrane inside the cod end of the flank. The flank steak is trimmed of excess fat, although flake fat is allowed. Bottom of flank steak is trimmed and beveled to have a tear drop shape with an average of no more than 1/2" of fat past the main lean tips of the flank.

Image of product is not meant to represent the actual product trim specification

Product Code: 75208
Description: BEEF FLANK STEAK
Program: Upper Choice
GTIN: 90710178752085

Case Dimensions: 15.7500" x 15.7500" x 7.5000"
Cube: 1.08
Pallet Tie x High: 6 x 9
Avg Case Weight: 37.2
Bags/Box: 3
Pieces/Box: 15

Box End Label



Brand Logo



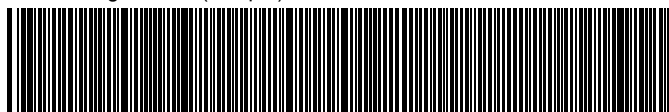
Box



Bag Impression



GS-128 Weight Label (sample)



(01)90710178752085(3201)000372(11)260609(21)12345678

NOTICE: The above statements, recommendations, suggestions and data we believe to be reliable. Nevertheless, all such statements, recommendations, suggestions and data herein above presented are made without guarantee, warranty, or responsibility of any kind on our part. The above information is subject to change without notice.