

BEEF LOIN TOP BUTT BNLS 2PC



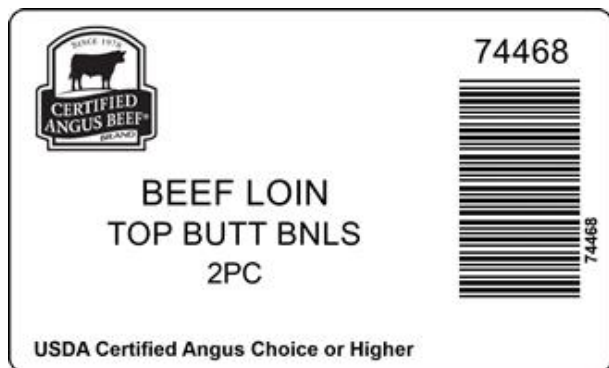
Image of product is not meant to represent the actual product trim specification

The Beef Loin – Top Butt Bnls. 2pc is derived from the Top Butt and is produced after the bones have been removed. The Coulotte Muscle (Biceps Femoris) is removed at the natural seam with flake fat allowed to remain. The fat pad beneath the coulotte may remain but may not contain any underlying adjacent lean associated with the tri tip. All muscles are removed with the exception of the Gluteus Medius, both muscles on the underside of the large main muscle are removed the “mouse” muscle is removed. The sciatic nerve is removed also. The Coulotte Muscle is denuded.

Product Code: 74468
Description: BEEF LOIN TOP BUTT BNLS 2PC
Program: Upper Choice
GTIN: 90710178744684

Case Dimensions: 15.7500" x 15.7500" x 9.2500"
Cube: 1.33
Pallet Tie x High: 5 x 6
Avg Case Weight: 57.1
Bags/Box: 9
Pieces/Box: 6

Box End Label



Brand Logo



Box



Bag Impression



GS-128 Weight Label (sample)



(01)90710178744684(3201)000571(11)260624(21)12345678

NOTICE: The above statements, recommendations, suggestions and data we believe to be reliable. Nevertheless, all such statements, recommendations, suggestions and data herein above presented are made without guarantee, warranty, or responsibility of any kind on our part. The above information is subject to change without notice.