

# BEEF LOIN TOP BUTT BNLS CC

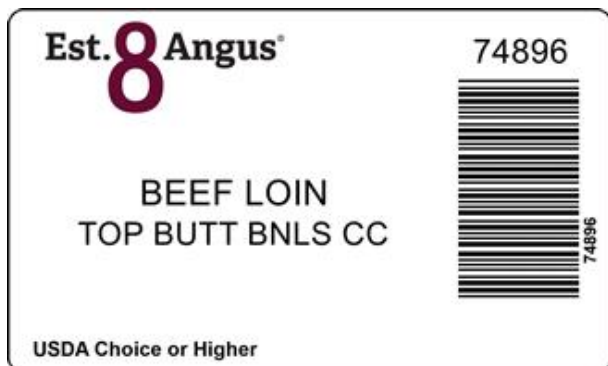


The Beef Loin – Top Butt Bnls. Center Cut 1/4" is derived from the Top Butt and is produced after the bones have been removed. The Coulotte Muscle (Biceps Femoris) is removed at the natural seam with flake fat allowed to remain. Fat thickness on fat pad is trimmed to approximately 1/4". All muscles are removed with the exception of the Gluteus Medius, both muscles on the underside of the large main muscle are removed the "mouse" muscle is removed. The sciatic nerve is removed also.

Image of product is not meant to represent the actual product trim specification

<b>Product Code:</b>	74896	<b>Case Dimensions:</b>	15.7500" x 15.7500" x 9.2500"
<b>Description:</b>	BEEF LOIN TOP BUTT BNLS CC	<b>Cube:</b>	1.33
<b>Program:</b>	Upper Choice	<b>Pallet Tie x High:</b>	5 x 6
<b>GTIN:</b>	90710178748965	<b>Avg Case Weight:</b>	59.9
		<b>Bags/Box:</b>	8
		<b>Pieces/Box:</b>	8

Box End Label



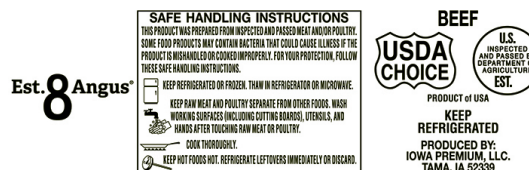
Brand Logo



Box



Bag Impression



GS-128 Weight Label (sample)



NOTICE: The above statements, recommendations, suggestions and data we believe to be reliable. Nevertheless, all such statements, recommendations, suggestions and data herein above presented are made without guarantee, warranty, or responsibility of any kind on our part. The above information is subject to change without notice.